

# An introduction to Cambridge Enterprise

The commercialisation arm of the University of Cambridge

KDDF Global C7D Tech Fair

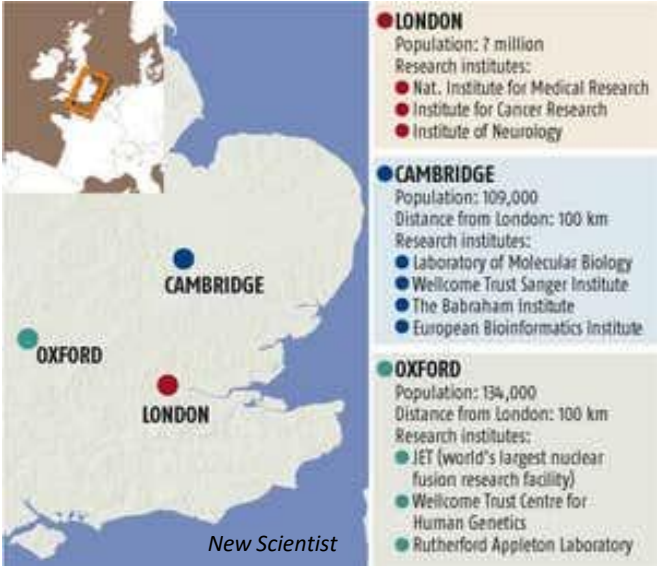
15 September 2023

**Dr Ione Meyer**

Senior Commercialisation Associate



# Innovation in numbers: The Cambridge Cluster



# Who we are

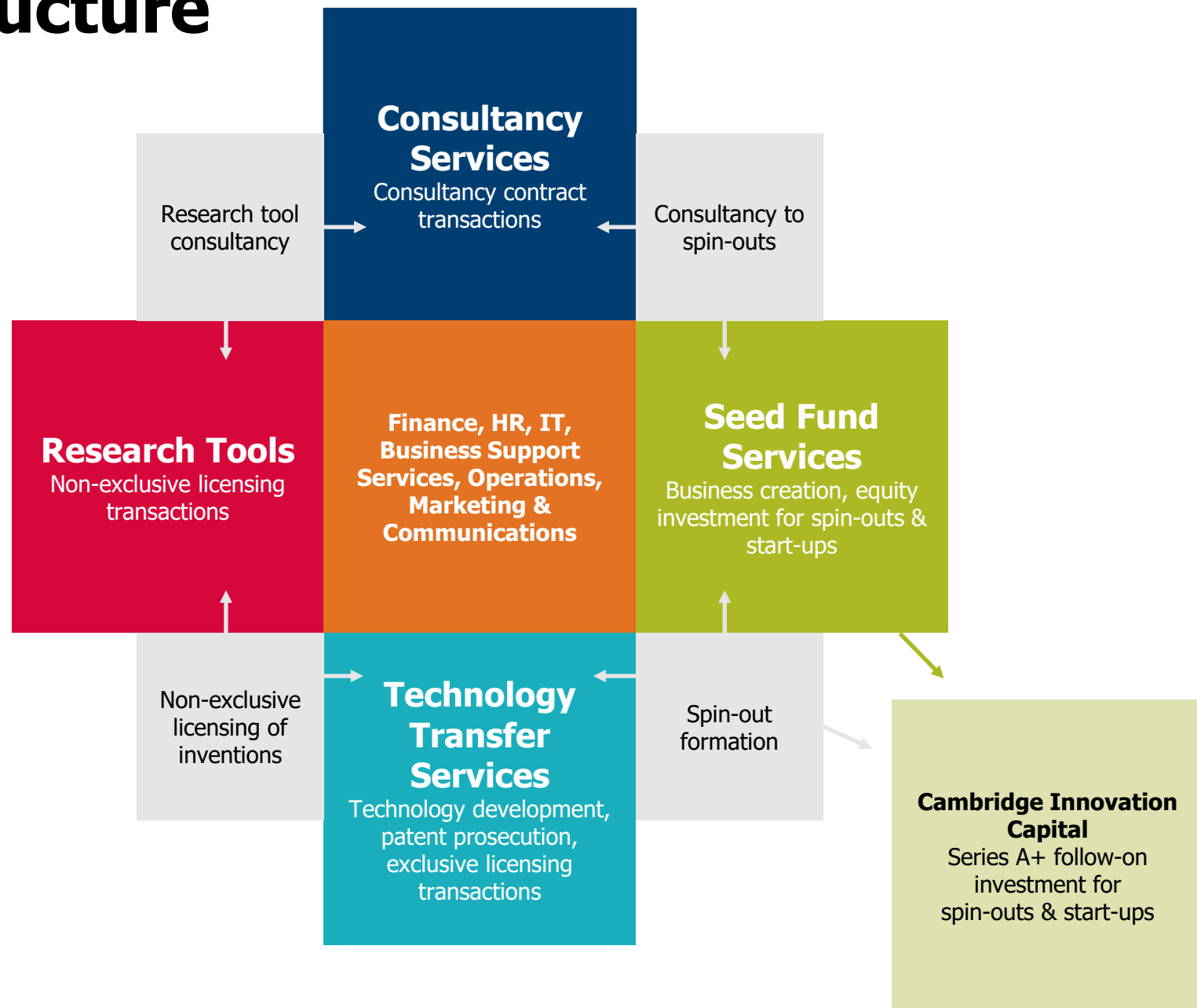
Part of the University of Cambridge, Cambridge Enterprise supports academics, researchers, staff and students in achieving knowledge transfer and research impact.

We do this by helping innovators, experts and entrepreneurs use commercial avenues to develop their ideas and expertise for the benefit of society, the economy, themselves and the University.

Liaising with organisations both locally and globally, we offer expert advice and support in commercialisation and social enterprise, including help with academic consultancy services; the protection, development and licensing of ideas; new company and social enterprise creation and seed funding.

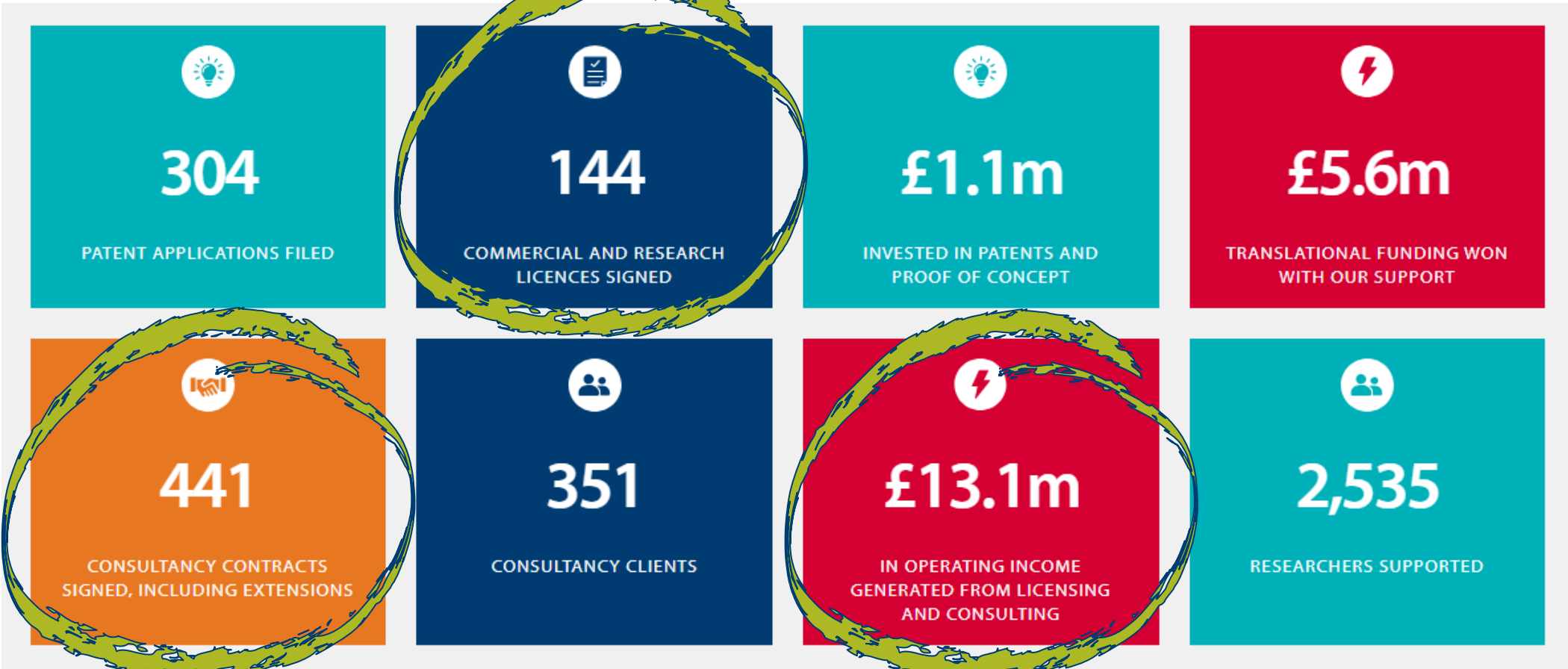


# Team structure



# Our performance, 2021-2022

## Technology and knowledge transfer in numbers



# Our performance, 2021-2022

## Investment in numbers



# Equity portfolio

There were 86 companies in the Cambridge Enterprise portfolio in 2018. As spin-outs grow and succeed they exit the portfolio, either via sale or public listing. Collectively, this process has generated billions of pounds in value. Here are a few examples of the current holdings:



# Creating impact through partnerships

**We share knowledge and expertise with partners both within and beyond the University.**



Launched in 2016, Apollo Therapeutics is a collaborative venture created to accelerate new drugs towards market. It combines the expertise of the world-leading UK universities with global pharmaceutical companies.



Launched in 2018, the Ceres Agri-Tech Knowledge Exchange Partnership catalyses early-stage technology transfer from the agri-tech cluster in the East of England in order to drive competitiveness and efficiency in this globally critical sector.

**Social  
Enterprise**

We work with Cambridge Social Ventures at Cambridge Judge Business School's Centre for Social Innovation to support budding social entrepreneurs.

**The NHS**

We work in close partnership with the Cambridge University Hospitals, the NHS Foundation Trust and NHS Innovation Partner Health Enterprise East.





# Services for external organisations

**Integral to our commercialisation activities are our relationships with external organisations.**

We act as a bridge between University members and industry, investors, public bodies and charities seeking to tap the expertise, inventions, technologies and intellectual property available from the University of Cambridge.

## Licensing opportunities

We facilitate licence agreements for the wide range of technologies and research tools that are ready for commercialisation.

## Consultancy contract services

Enables the University to share its knowledge with government, industry and the public sector, to drive change and make a direct impact on society.



## One of our current opportunities:

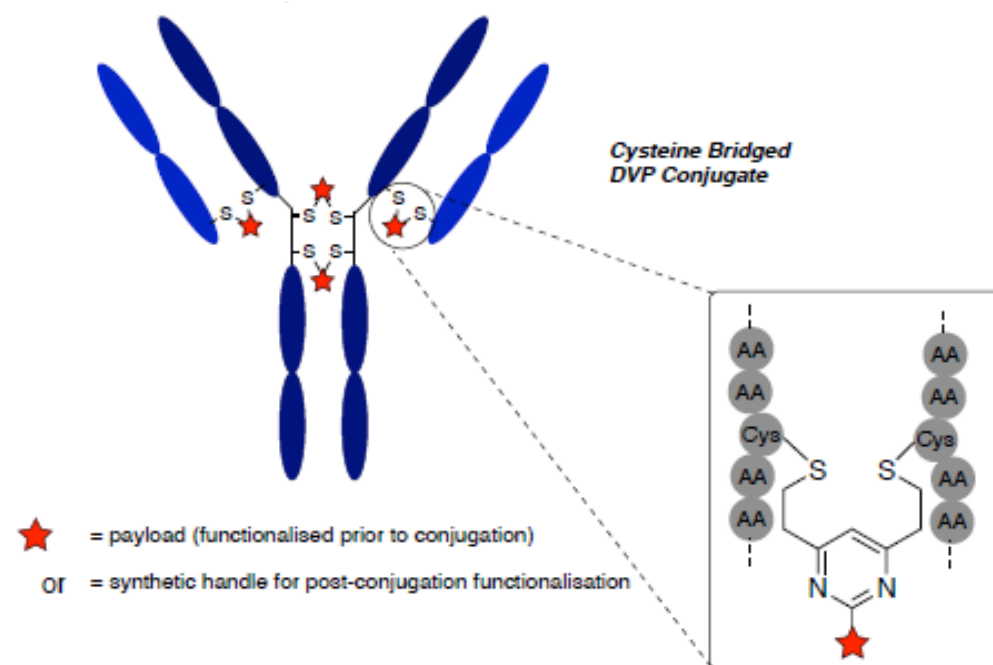
# A Divinylpyrimidine Linker System for Stable and Functional antibody-drug conjugates (ADCs)

Divinylpyrimidine (DVP) conjugation:

- Two vinyl moieties to allow covalent re-bridging of reduced disulfide bond.
- Reactive synthetic handles suitable for attachment of other modalities.

Differentiation from other ADC conjugation technology:

- Native antibody
- Controlled drug-antibody ratio (DAR) of 4
- No retro-Michael addition
- Post-conjugation modification via alkene functionalisation



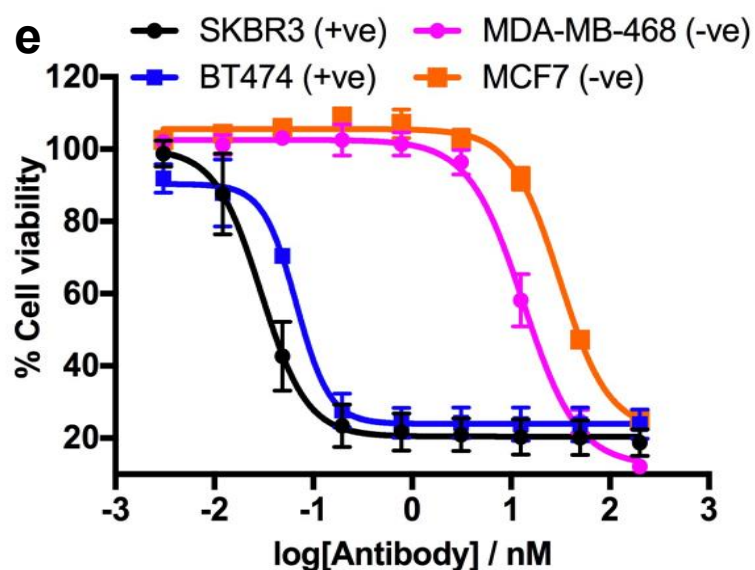
International patent application filed 31/07/2018  
(WO2020/025108 A1)



## One of our current opportunities:

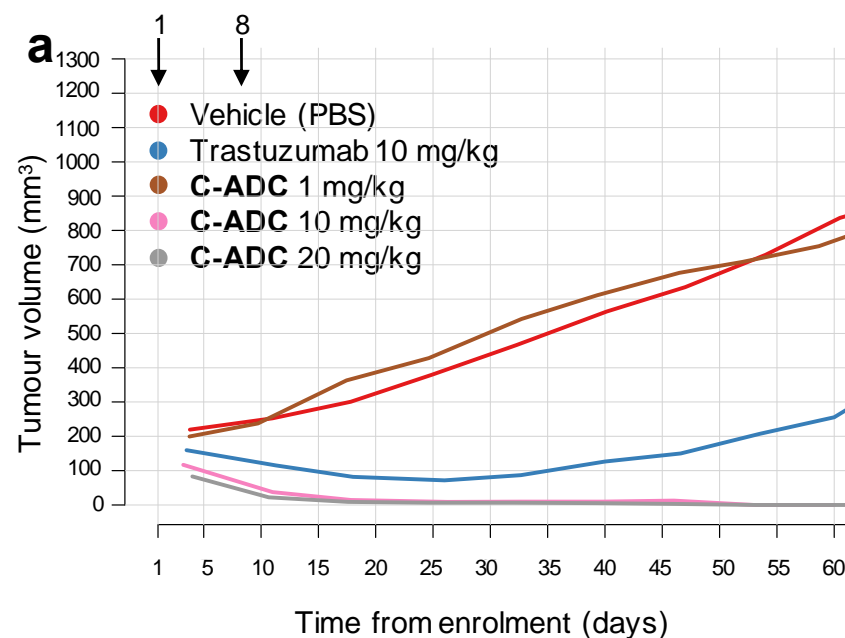
# A Divinylpyrimidine Linker System for Stable and Functional antibody-drug conjugates (ADCs)

Selective cytotoxicity demonstrated *in vitro*



Breast cancer cell lines:  
HER2-positive (SKBR3 and BT474)  
HER2-negative (MCF7 and MDA-MB-468)

*In vivo* efficacy: complete tumour regression at 10 and 20 mg/kg



Available for licensing



# Contact us

**We welcome enquiries from external organisations.  
Please get in touch with us if you'd like to start a conversation.**

Cambridge Enterprise  
University of Cambridge  
Hauser Forum  
3 Charles Babbage Road  
Cambridge, CB3 0GT

Email: [enquiries@enterprise.cam.ac.uk](mailto:enquiries@enterprise.cam.ac.uk)  
[www.enterprise.cam.ac.uk](http://www.enterprise.cam.ac.uk)

 @UCamEnterprise  
 Cambridge Enterprise



**Scan to read our  
Annual Review 2022**

## Thank you

